



PRO-702 | ALUMINUM PROFILE 702

PROFILE 702 IS A DRIVE OVER RATED RECESSED 4 FOOT PROFILE EQUIPPED WITH A DURABLE TEMPERED GLASS DIFFUSER DESIGNED FOR LANDSCAPE ARCHITECTURE

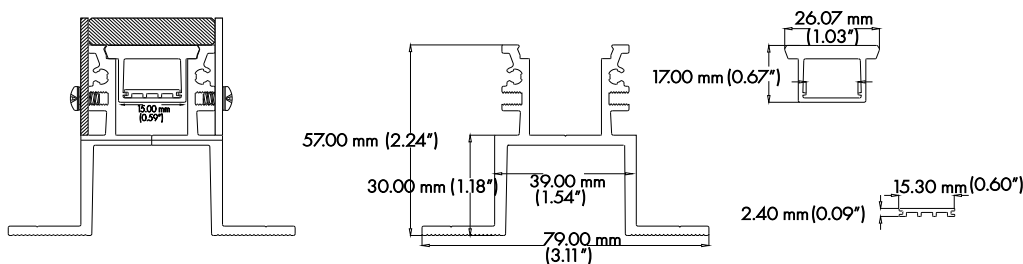
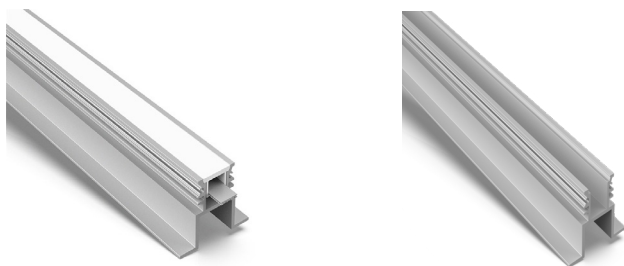
PROJECT: _____

DISTRIBUTOR: _____

CONTRACTOR: _____

TYPE _____

COMMENTS _____



CROSS SECTION

PHYSICAL

DIMENSIONS	79.00mm (3.11") WIDTH *65.00mm (2.55") HEIGHT* 1219.20mm (48")
INTERNAL WIDTH	15.00mm (0.59")
PRESSURE STATIC	2 TONS
MATERIALS	6063 ALUMINUM + TEMPERED GLASS + STAINLESS STEEL BAR
BEAM ANGLE	80°
MOUNTING	INGROUND RECESSED
FINISH	ANODIZED SILVER OR CONSULT FACTORY FOR CUSTOM RAL COLORS
TAPE COMPATIBILITY	K SERIES IP20 & IP67, J SERIES IP20 & IP67, C SERIES, G SERIES IP20 & IP67
LENS & LIGHT LOSS FACTOR	WHITE = 30%

LENS, GLASS DIFFUSER, TRAY, STAINLESS STEEL BAR, AND PAIR OF END CAPS INCLUDED

ORDERING INFORMATION

PRODUCT	PRODUCT NUMBER	MOUNTING	LENS	FINISH	LENGTH
PRO	702	RC	WH	SV	4FT
PROFILE	702	RC = RECESSED	WH = WHITE	SV = SILVER CUSTOM RAL = RAL CODE	4FT

PRO-702 | ALUMINUM PROFILE 702



ACCESSORIES (SOLD SEPARATELY)

AA-PRO-702-EC	PAIR OF END CAPS
AA-PRO-702-LENS-WH	4FT WHITE LENS