



# PRO-602 | ALUMINUM PROFILE 602

PROFILE 602 IS A 4 FOOT MINI PROFILE DESIGNED TO BE INSTALLED AT THE EDGE OF A STAIR TO ILLUMINATE EACH STEP AND PROVIDES A SLIP RESISTANT SURFACE.

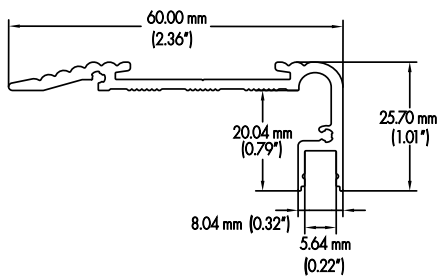
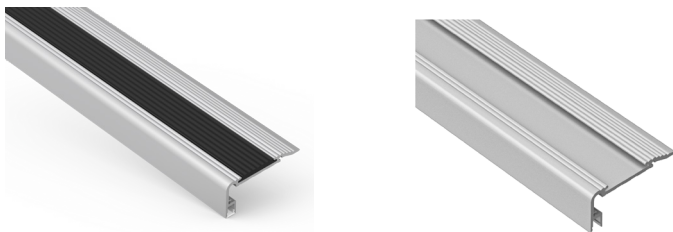
PROJECT: \_\_\_\_\_

DISTRIBUTOR: \_\_\_\_\_

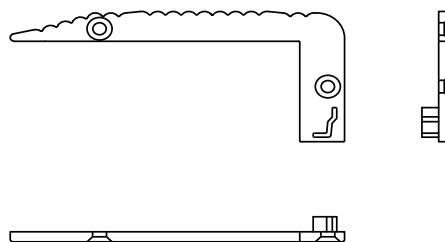
CONTRACTOR: \_\_\_\_\_

TYPE \_\_\_\_\_

COMMENTS \_\_\_\_\_



CROSS SECTION



END CAP

## PHYSICAL

DIMENSIONS	60.00mm (2.36") WIDTH *25.70mm (1.01") HEIGHT* 1219.20mm (48")
INTERNAL WIDTH	5.64mm (0.22")
MATERIALS	6063 ALUMINUM
BEAM ANGLE	40°
MOUNTING	SURFACE/STAIR
FINISH	ANODIZED SILVER OR CONSULT FACTORY FOR CUSTOM RAL COLORS
TAPE COMPATIBILITY	M SERIES
LENS & LIGHT LOSS FACTOR	WHITE = 30%, BLACK = 78%

\*LENS, ANTI RUBBER SLIP, AND PAIR OF END CAPS INCLUDED\*

## ORDERING INFORMATION

PRODUCT	PRODUCT NUMBER	MOUNTING	LENS	FINISH	LENGTH
PRO	602	SF	WH	SV	4FT
PROFILE	602	SF = SURFACE	WH = WHITE BK = BLACK	SV = SILVER CUSTOM RAL = RAL CODE	4FT

## ACCESSORIES (SOLD SEPARATELY)

AA-PRO-602-EC	PAIR OF END CAPS
AA-PRO-602-RS	ANTI SLIP RUBBER
AA-PRO-602-BK	4FT BLACK LENS
AA-PRO-602-CONLENS-BK	UP TO 80FT OF CONTINOUS BLACK LENS
AA-PRO-602-LENS-WH	4FT WHITE LENS
AA-PRO-602-CONLENS-WH	UP TO 80FT OF CONTINOUS WHITE LENS