



# PRO-501 | ALUMINUM PROFILE 501

PROFILE 501 IS A RECESSED MOUNTED 4 FOOT PROFILE DESIGNED TO BE INSTALLED IN MUD-IN APPLICATIONS.

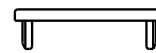
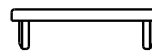
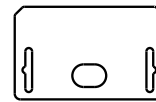
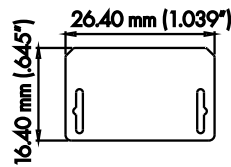
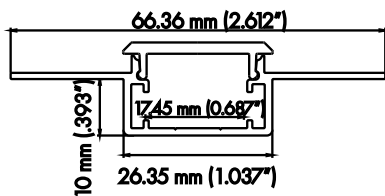
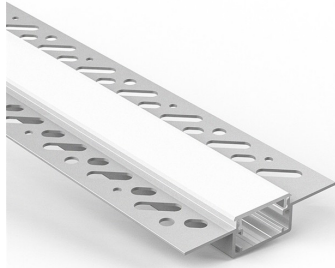
**PROJECT:** \_\_\_\_\_

**DISTRIBUTOR:** \_\_\_\_\_

**CONTRACTOR:** \_\_\_\_\_

**TYPE:** \_\_\_\_\_

**COMMENTS:** \_\_\_\_\_



CROSS SECTION

END CAP

## PHYSICAL

<b>DIMENSIONS</b>	2.612" (66.36MM) WIDTH * .645" (16.4MM) HEIGHT * 48" (1219.2MM) LENGTH
<b>INTERNAL WIDTH</b>	.687" (17.45MM)
<b>MATERIALS</b>	6063 ALUMINUM
<b>FINISH</b>	ANODIZED SILVER
<b>LENS &amp; LIGHT LOSS FACTOR</b>	WHITE=30%, FROSTED=19%, CLEAR=5%

\*LENS, END CAPS, AND MOUNTING CLIPS INCLUDED\*

## ORDERING INFORMATION

PRODUCT CODE	PRODUCT NUMBER	MOUNTING	LENS	FINISH	LENGTH
PRO	501	RC	WH	SV	4FT
PROFILE	501	RC = RECESSED	WH = WHITE	SV = SILVER CUSTOM RAL = RAL CODE	4FT

## ACCESSORIES (SOLD SEPARATELY AS A SINGLE)



AA-PRO-JOINER-180  
JOINER 180 DEGREES



AA-PRO-JOINER-90V  
JOINER 90 DEGREES  
(VERTICAL)



AA-PRO-JOINER-90H  
JOINER 90 DEGREES  
(HORIZONTAL)



AA-PRO-JOINER-120V  
JOINER 120 DEGREES  
(VERTICAL)



AA-PRO-JOINER-120H  
JOINER 120 DEGREES  
(HORIZONTAL)