



PRO-401 | ALUMINUM PROFILE 401

PROFILE 401 IS A 4 FOOT SUSPENDED MOUNTED PROFILE THAT PROVIDES BOTH DIRECT AND INDIRECT ILLUMINATION AT A 70° BEAM ANGLE. THIS PROFILE CAN BE INSTALLED IN GENERAL ILLUMINATION APPLICATIONS.

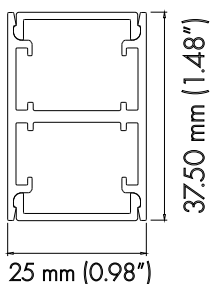
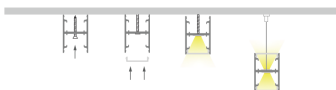
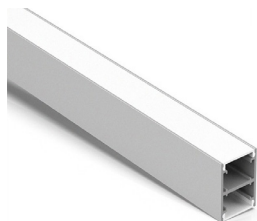
PROJECT: _____

DISTRIBUTOR: _____

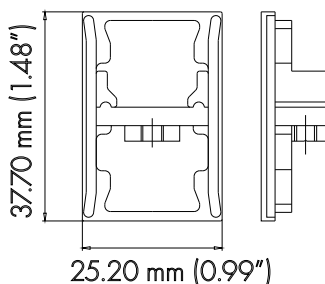
CONTRACTOR: _____

TYPE _____

COMMENTS _____



CROSS SECTION



END CAP



SUSPENSION CLIP

PHYSICAL

DIMENSIONS	25mm (0.98") WIDTH *37.50mm (1.48") HEIGHT* 1219.20mm (48")
INTERNAL WIDTH	22mm (0.87")
MATERIALS	6063 ALUMINUM
BEAM ANGLE	70°
MOUNTING	SUSPENSION
FINISH	ANODIZED SILVER OR CONSULT FACTORY FOR CUSTOM RAL COLORS
TAPE COMPATIBILITY	K SERIES IP20 & IP67, J SERIES IP20 & IP67, C SERIES, G SERIES IP20 & IP67
LENS & LIGHT LOSS FACTOR	WHITE = 30%

LENS, PAIR OF END CAPS, AND SUSPENSION KIT INCLUDED

ORDERING INFORMATION

PRODUCT	PRODUCT NUMBER	MOUNTING	LENS	FINISH	LENGTH
PRO	401	SK	WH	SV	4FT
PROFILE	401	SK = SUSPENSION	WH = WHITE	SV = SILVER CUSTOM RAL = RAL CODE	4FT

PRO-401 | ALUMINUM PROFILE 401



ACCESSORIES (SOLD SEPARATELY)

AA-PRO-401-EC	PAIR OF END CAPS
AA-PRO-401-SK	10FT ADJUSTABLE SUSPENSION KIT
AA-PRO-401-LENS-WH	4FT WHITE LENS
AA-PRO-401-CONTLENS-WH	UP TO 80FT OF CONTINOUS WHITE LENS