



PRO-205 | ALUMINUM PROFILE 205

PROFILE 205 IS A RECESSED MOUNTED 4 FOOT PROFILE CREATED TO PROVIDE INDIRECT ACCENT ILLUMINATION WHEN INTEGRATED INTO WALLS AND CEILINGS. THIS PROFILE CAN BE USED AS A STEP LIGHT.

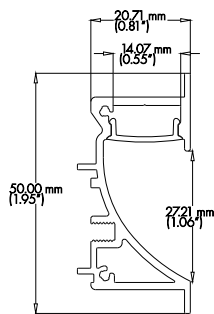
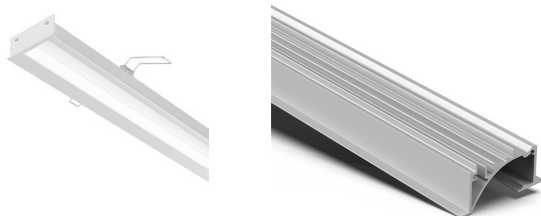
PROJECT: _____

DISTRIBUTOR: _____

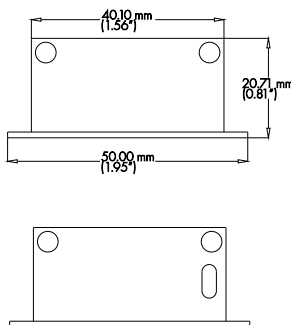
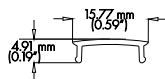
CONTRACTOR: _____

TYPE _____

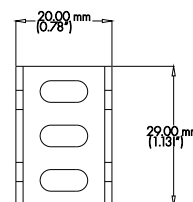
COMMENTS _____



CROSS SECTION



END CAP



SPRING CLIP

PHYSICAL

DIMENSIONS	20.71mm (0.81") WIDTH *50mm (1.95") HEIGHT* 1219.20mm (48")
INTERNAL WIDTH	14.07mm (0.55")
MATERIALS	6063 ALUMINUM
BEAM ANGLE	100°
MOUNTING	RECESSED
FINISH	ANODIZED SILVER OR CONSULT FACTORY FOR CUSTOM RAL COLORS
TAPE COMPATIBILITY	K SERIES IP20 & IP67, J SERIES IP20 & IP67, C SERIES, G SERIES IP20 & IP67
LENS & LIGHT LOSS FACTOR	WHITE = 30%

LENS, PAIR OF END CAPS, AND PAIR OF SPRING CLIPS INCLUDED

ORDERING INFORMATION

PRODUCT	PRODUCT NUMBER	MOUNTING	LENS	FINISH	LENGTH
PRO	205	RC	WH	SV	4FT
PROFILE	205	RC = RECESSED	WH = WHITE	SV = SILVER CUSTOM RAL = RAL CODE	4FT

ACCESSORIES (SOLD SEPARATELY)

AA-PRO-205-EC	PAIR OF END CAPS
AA-PRO-205-SC	PAIR OF SPRING CLIPS
AA-PRO-205-LENS-WH	4FT WHITE LENS
AA-PRO-205-CONTLENS-WH	UP TO 80FT OF CONTINUOUS WHITE LENS