



PRO-114 | ALUMINUM PROFILE 114

PROFILE 114 IS A SURFACE MOUNTED 4 FOOT GRAZER PROFILE DESIGNED TO BE INSTALLED IN AREAS WHERE 80° WALL WASHING IS NEEDED.

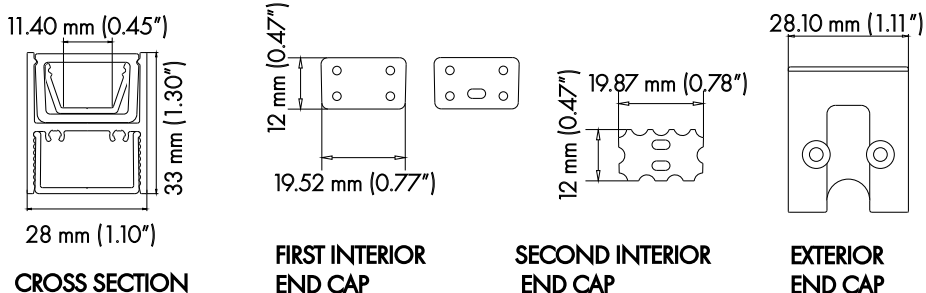
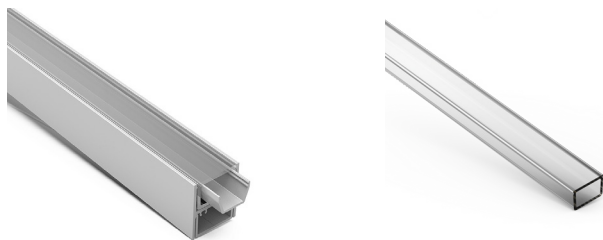
PROJECT: _____

DISTRIBUTOR: _____

CONTRACTOR: _____

TYPE _____

COMMENTS _____



PHYSICAL

DIMENSIONS	28mm (1.10") WIDTH *33mm (1.30") HEIGHT* 1219.20mm (48")
INTERNAL WIDTH	11.40mm (0.45")
MATERIALS	6063 ALUMINUM
BEAM ANGLE	80°
MOUNTING	SURFACE
FINISH	ANODIZED SILVER OR CONSULT FACTORY FOR CUSTOM RAL COLORS
TAPE COMPATIBILITY	K SERIES IP20 & IP67, J SERIES IP20 & IP67, C SERIES, G SERIES IP20 & IP67
LENS & LIGHT LOSS FACTOR	CLEAR = 5%

LENS, PAIR OF END CAPS, AND MOUNTING PLATE INCLUDED

ORDERING INFORMATION

PRODUCT	PRODUCT NUMBER	MOUNTING	LENS	FINISH	LENGTH
PRO	114	MP	CL	SV	4FT
PROFILE	114	MP = MOUNTING PLATE	CL = CLEAR	SV = SILVER CUSTOM RAL = RAL CODE	4FT

PRO-114 | ALUMINUM PROFILE 114



ACCESSORIES (SOLD SEPARATELY)

AA-PRO-114-EC	PAIR OF END CAPS
AA-PRO-114-LENS-CL	4FT CLEAR LENS
AA-PRO-114-MP	MOUNTING PLATE