

ACE-N-M | MINI NEON OUTDOOR



LISTED

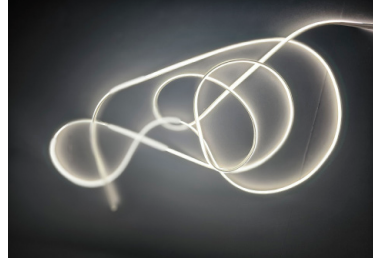
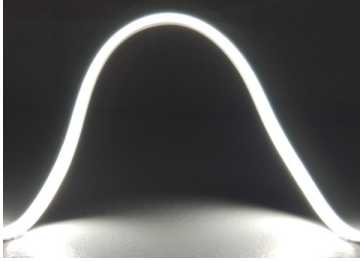
PROJECT: _____

DISTRIBUTOR: _____

CONTRACTOR: _____

TYPE _____

COMMENTS _____



SPECS

Dimensions for Static White	0.39" WIDTH *0.25" HEIGHT
Dimensions for RGBW	0.39" WIDTH *0.37" HEIGHT
Minimum bending radius	1.97"
Operating temperature	-4°F to 104°F
IP Rating	IP67 Outdoor
Neon lead	Sold separately (see below for lengths available)
Available options	Static white and RGBW
Static white options	2700K, 3000K, 3500K, 4000K, 5000K
RGBW DMX options	RGB30K
Lumens available for Static white	400LM/FT, 600LM/FT
Lumens available for RGBW	30LM/FT
CRI (Static white)	90+
Binning	Single
Warranty	5 years
Input voltage	24V DC
LEDs/ft for static white	70
LEDs/ft for RGBW	42
Field cuttable	No
Production intervals for static white	every 0.78"
Production intervals for RGBW	every 1.64"
Beam angle for static white	150°
Beam angle for RGBW	140°
Dimming	ELV, TRIAC, 0-10V , DMX
Standard Finish	White
Material	Silicone

ORDERING INFORMATION

STATIC WHITE

PRODUCT	INTENSITY	FEED	CCT	IP	LENGTH
ACE-N-M	XXX	XX	XXK	IP67	XXFT
ACE NEON MINI	400 = 400 LM/FT 600 = 600 LM/FT	EF = END FEED	27K = 2700K 30K = 3000K 35K = 3500K 40K = 4000K 50K = 5000K	IP67 = OUTDOOR	CL = CUSTOM LENGTH

RGBW

PRODUCT	INTENSITY	FEED	CCT	IP	LENGTH
ACE-N-M	XXX	XX	XX	IP67	XXFT
ACE NEON MINI	30 = 30 LM/FT	EF = END FEED	RGB30K = RGB 3000K	IP67 = OUTDOOR	CL = CUSTOM LENGTH

ELECTRICAL

STATIC WHITE

OUTPUT	CCT					WATTAGE	MAX CONT. RUN	MAX RUN W/96W	INPUT VOLTAGE
	2700K	3000K	3500K	4000K	5000K				
~400 LM/FT	390	400	412	419	417	3.1W/FT	28'	30'	24V DC
~600 LM/FT	589	602	614	623	621	4.6W/FT	18'	20'	

RGBW

OUTPUT	WAVELENGTHS / CCT				WATTAGE	MAX CONT. RUN	MAX RUN W/96W	INPUT VOLTAGE
	RED	GREEN	BLUE	3000K				
~30 LM/FT	630NM	530NM	470NM	30	3.1W/FT	16'	19'	24V DC

FEED OPTION



END FEED

LEADER CABLE SOLD SEPARATELY (CONNECTS NEON TO THE DRIVER)

STATIC WHITE

AA-N-M-2W-LEAD-10FT	ACE ACCESSORIES NEON MINI SINGLE 2 WIRE 10FT BARE LEAD
---------------------	--

RGBW

AA-N-M-5W-LEAD-10FT	ACE ACCESSORIES NEON MINI SINGLE 5 WIRE 10FT BARE LEAD
---------------------	--

JUMPER CABLE SOLD SEPARATELY (CONNECTS NEON TO THE NEON)

STATIC WHITE

AA-N-M-2W-JUMP-1FT	ACE ACCESSORIES NEON MINI 2 WIRE 1FT JUMPER CABLE
--------------------	---

AA-N-M-2W-JUMP-6IN	ACE ACCESSORIES NEON MINI 2 WIRE 6IN JUMPER CABLE
--------------------	---

RGBW

AA-N-M-5W-JUMP-1FT	ACE ACCESSORIES NEON MINI 5 WIRE 1FT JUMPER CABLE
--------------------	---

AA-N-M-5W-JUMP-6IN	ACE ACCESSORIES NEON MINI 5 WIRE 6IN JUMPER CABLE
--------------------	---

END CAP (TERMINATE END OF EACH NEON RUN)

STATIC WHITE

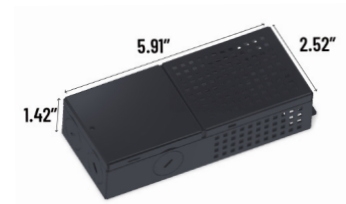
AA-N-M-2W-EC	ACE ACCESSORIES NEON MINI SINGLE 2 WIRE END CAP
--------------	---

RGBW

AA-N-M-5W-EC	ACE ACCESSORIES NEON MINI SINGLE 5 WIRE END CAP
--------------	---

DRIVERS SOLD SEPARATELY (POWER UP THE NEON)

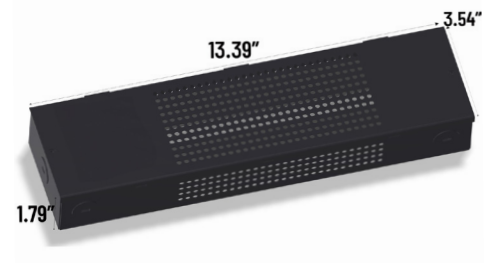
ACE-PWR-36W	120V-277V INPUT, 5 IN 1 DIMMING 36W CLASS 2 POWER SUPPLY
-------------	--



ACE-PWR-96W	120V-277V INPUT, 5 IN 1 DIMMING 96W CLASS 2 POWER SUPPLY
-------------	--



ACE-PWR-192W	120V-277V INPUT, 5 IN 1 DIMMING 192W CLASS 2 POWER SUPPLY
--------------	---



DECODERS SOLD SEPARATELY (TRANSLATES DMX512 TO THE ACE-N-M, ONLY FOR RGBW)

RGBW

ACE-PWR-DMX-4C	ACE 100W 512 DMX DECODER 4 CHANNEL
-----------------------	------------------------------------



ACE-PWR-DMX-4C-BT	ACE 100W 512 DMX DECODER 4 CHANNEL BLUETOOTH (USE APP TO CONTROL)
--------------------------	---



CONTROLLERS (TRANSLATES DMX512 TO THE DECODER, ONLY FOR RGBW)

RGBW

ACE-DMX-CTRL-1	ACE WALL MOUNT 1 ZONE TWO UNIVERSE DMX CONTROLLER
-----------------------	---



ACE-DMX-CTRL-10	ACE WALL MOUNT 10 ZONE TWO UNIVERSE DMX CONTROLLER
------------------------	--



MOUNTING OPTIONS (SECURES ITEMS ONTO STRUCTURE)

AA-N-M-MC

ACE ACCESSORIES NEON MINI SINGLE MOUNTING CLIP



AA-N-M-PRO-4FT

ACE ACCESSORIES NEON MINI 4FT PROFILE

